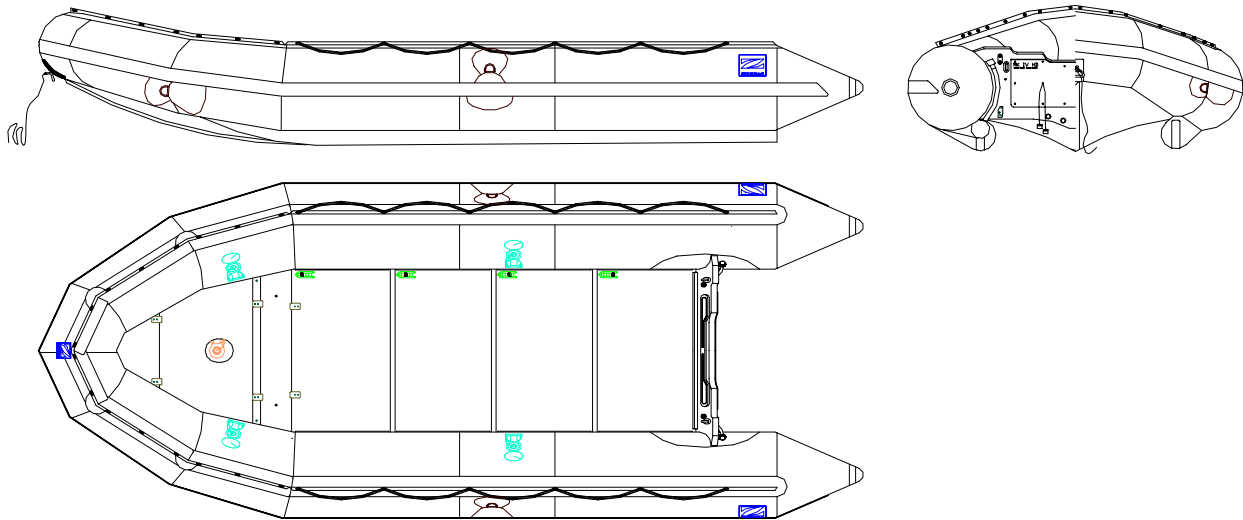




ZODIAC MARK IV HEAVY DUTY

P/N Z80140

Rev 1 – 3 April 07
TECHNICAL DATA SHEET



Large and voluminous but can still pack down into bags

This is a unique range of larger inflatables that is designed primarily to carry heavy loads at planing speeds due to its patented Futura hull shape. HD uses heavy materials and is reinforced throughout making it suitable for extreme service.

Even at sizes up to 7 m, they can still be rolled up into a bag and thrown into the back of a pickup truck or aircraft.

The MK 4 HD P/N Z80140 is available on stock.

The overall appearances of the watercraft depicted in this document are trademarks of Zodiac

Important Note: Boats available in North America may have different specifications.

THIS MATERIAL CONTAINS PROPRIETARY DATA BELONGING TO ZODIAC INTERNATIONAL .UNAUTHORIZED DISCLOSURE, USE OR REPRODUCTION WILL RESULT IN LIABILITY. ZODIAC RESERVES THE RIGHT TO CHANGE THE SPECIFICATIONS OF THIS TECHNICAL DATA SHEET WITHOUT NOTICE.

Dimensions and weight + or - 3 % (5% on prototype)

page 1 / 4



ZODIAC INTERNATIONAL

DIVISION MARINE

MK IV HD BOAT DEFINITION

CAPACITY

. maximum number of persons (ISO6185) :	12	12
. maximum payload including engine and fuels (ISO6185) :	1720 kg	3792 lbs
. floorboard usable area :	3.585 m ²	38.57 sq ft
. buoyancy tube volume :	2500 l	88 cu ft

DIMENSIONS

. overall length :	5.30 m	17' 5"
. inside length :	3.70 m	12' 2"
. overall width :	2.14 m	7'
. inside width :	1.04 m	3' 5"
. weight empty :	150 kg	331 lbs
. buoyancy tube diameter :	0.55 m	1'10"
. folded dimensions :	sac 1	1.55x0.75x0.42
	bag 1	5'1"x2'6"x1'5"
	sac 2	1.35x0.67x0.25
	bag 2	4'5"x2'2"x0'10"

SAFETY / INFLATION

. number of airtight compartments on main buoyancy tube :	5
. intercommunicating, inflation valves :	4
. inflatable keel :	1
. lower tubes :	2
. design category (EC 94/25) :	C

ENGINE POWER

. shaft length :	L	20"
. recommended power :	45 kW	60 HP
. maximum power :	60 kW	80 HP
. maximum power with 2 engines :	2 x 30 kW	2 x 40 HP
. maximum engine weight :	140 Kg	308 lbs
. maximum weight with 2 engines :	2 x 95 Kg	2 x209 lbs

THIS MATERIAL CONTAINS PROPRIETARY DATA BELONGING TO ZODIAC INTERNATIONAL .UNAUTHORIZED DISCLOSURE, USE OR REPRODUCTION WILL RESULT IN LIABILITY. ZODIAC RESERVES THE RIGHT TO CHANGE THE SPECIFICATIONS OF THIS TECHNICAL DATA SHEET WITHOUT NOTICE.

Dimensions and weight + or - 3 % (5% on prototype)

page 2 / 4



STANDARD EQUIPMENT

FABRIC

. buoyancy tubes :	black , 1670 dtx, polyester, hypalon neoprene
. speed tubes :	black , 940 dtx, polyamid, hypalon neoprene
. bottom :	black , 940 dtx, polyamid, hypalon neoprene
. keel :	black, 940 dtx, polyamid, hypalon neoprene

TRANSOM MARINE PLYWOOD

. self-bailers :	4
. aluminium engine mounting plate :	1
. engine transom pad (marine plywood) :	1
. transom triangular deflector :	2
. transom bottom stainless steel protection shoe :	1

FLOORBOARD

. anti-skid floorboard (anodised aluminium) :	4 parts
. bow floorboard marine plywood :	2
. stringers, wood profile :	2
. fixed bow thrustboard :	1

VALVES

. buoyancy tube intercommunication / inflation valves (delrin cap) :	4
. keel inflation valve (delrin):	1
. inflation valves on hoses to speed tubes (delrin):	2

REINFORCEMENTS

. all around rubbing strake, flat profile, black:	1
. large transom ovoid reinforcement :	1670 dtx (PY)
. rubbing strake bow triangular profile :	1
. rubbing strake underneath lower tubes :	1 + 1

THIS MATERIAL CONTAINS PROPRIETARY DATA BELONGING TO ZODIAC INTERNATIONAL .UNAUTHORIZED DISCLOSURE, USE OR REPRODUCTION WILL RESULT IN LIABILITY. ZODIAC RESERVES THE RIGHT TO CHANGE THE SPECIFICATIONS OF THIS TECHNICAL DATA SHEET WITHOUT NOTICE.

Dimensions and weight + or - 3 % (5% on prototype)

page 3 / 4



ZODIAC INTERNATIONAL

DIVISION MARINE

HANDLING

. lateral large lifting D rings (stainless steel with black coating) :	2
. bow lifting rings (stainless steel folding padeyes on thrustboard) :	2
. aft lifting rings (stainless steel U-bolts on transom)	2
. bow handle (plated brass) with black coating :	1
. exterior lifeline :	all around

TOWING

. aft towing rings, (stainless steel U bolts on transom) :	2
. bow large towing D-rings on tube (stainless steel with black coating)	2

OTHER EQUIPMENT

. foot bellows + hose :	2
. repair kit with pressure indicator :	1
. paddles (aluminum shaft, plastic blade) with brackets :	2
. floorboard bag :	1
. boat bag :	1

THIS MATERIAL CONTAINS PROPRIETARY DATA BELONGING TO ZODIAC INTERNATIONAL .UNAUTHORIZED DISCLOSURE, USE OR REPRODUCTION WILL RESULT IN LIABILITY. ZODIAC RESERVES THE RIGHT TO CHANGE THE SPECIFICATIONS OF THIS TECHNICAL DATA SHEET WITHOUT NOTICE.

Dimensions and weight + or - 3 % (5% on prototype)

page 4 / 4



ZODIAC INTERNATIONAL

DIVISION MARINE

THIS MATERIAL CONTAINS PROPRIETARY DATA BELONGING TO ZODIAC INTERNATIONAL . UNAUTHORIZED DISCLOSURE, USE OR REPRODUCTION WILL RESULT IN LIABILITY. ZODIAC RESERVES THE RIGHT TO CHANGE THE SPECIFICATIONS OF THIS TECHNICAL DATA SHEET WITHOUT NOTICE.

Dimensions and weight + or - 3 % (5% on prototype)

page 5 / 4